

## GETTING OUT OF DEBT, ONE BLOCK AT A TIME



MCS has introduced our first efforts at naming opportunities for the new Early Childhood Wing. We are publicly inviting our friends, families, and alumni to name a room or specific location in the new building. In much the same manner as colleges or businesses, our desire is to honor and commemorate the financial gift to the school. We have designated \$1.5 million in naming opportunities in order to fully cover our goal of eliminating one of our bank notes valued at \$1.2 million.



We believe this is a wonderful means of enabling our friends the chance to leave a permanent legacy in the halls of MCS. Rooms, offices, and hallways will be adorned with a beautiful bronze plaque with raised gold lettering. In dividing up the available spaces, there are a total of \$1.5 million in naming opportunities and it is our goal that each space be sponsored by a friend of MCS.



But who has thousands of dollars to give in this economy? Perhaps few of us, but if we pull our resources together, we can achieve this goal. For example, family members could divide the cost and name a room in honor or memory of a parent, grandparent, child, or loved one. We would like to name several rooms after cherished teachers and former employees at MCS and we are hoping our alumni will contribute to the fund naming a room in their honor (i.e., Chet Weigle, Mike Mecurio, Ruth Royer, Winnie Lehnhart, Jim Comstock, Russ Enzor, Eva Mae Brundage, Rosalie Wade, Jack Herr, Carl Key...).

Perhaps you are able to buy a block or several building blocks at this time. Each block represents a square foot at the cost of \$65 each (\$1.5 million naming goal divided by 23,311 total square feet). Friends of MCS can buy a block or several blocks and request that they be designated for a specific naming opportunity. So, it would take the purchase of approximately 153 blocks to name a \$10,000 room and so forth.

We need all of our friends to consider contributing to this cause by purchasing blocks and rooms. Let's not miss this chance to thank those special people or honor your family. The Lord will bless you and your family will be proud of the legacy it bears.

Simply indicate how many blocks you would like to purchase and if applicable, designate the naming opportunity. You may also buy any of the available rooms at the full price listed and the name the room. Please see floor plan diagrams on the next page.

## QUESTIONS AND ANSWERS

- **Why did we build the new early childhood wing?**  
Over five years ago, the vision was cast to grow the enrollment of the school from the earliest entry point – early childhood. Growing the school one grade level at a time seemed the most logical long-term solution for the viability of MCS as an institution. Early childhood enrollment was increasing rapidly and demanding more and more space within the building.
- **Was the new wing built in response to the voucher program?**  
No, the new voucher program (Ohio EdChoice) brought students into the school system across all grade levels. The decision

to build was made prior to the Ohio EdChoice program and the building's completion coincided with the enrollment increase brought by the vouchers.

- **Why did we build the new addition before it was fully paid for?**  
The funds for the new addition have come from two major sources: the school budget and donations. It was expected that a portion of the cost (\$2.2 million) would come from the operating budget. While many individuals, corporations, and foundations have been helpful, fundraising for donations (\$1.5 million) has proven more difficult than expected, especially

# QUESTIONS AND ANSWERS *(continued)*

in today's economic environment. In simple terms, we followed the plan that most of our families have used – save money for initial costs, then work and finance (mortgage) the remaining balance.

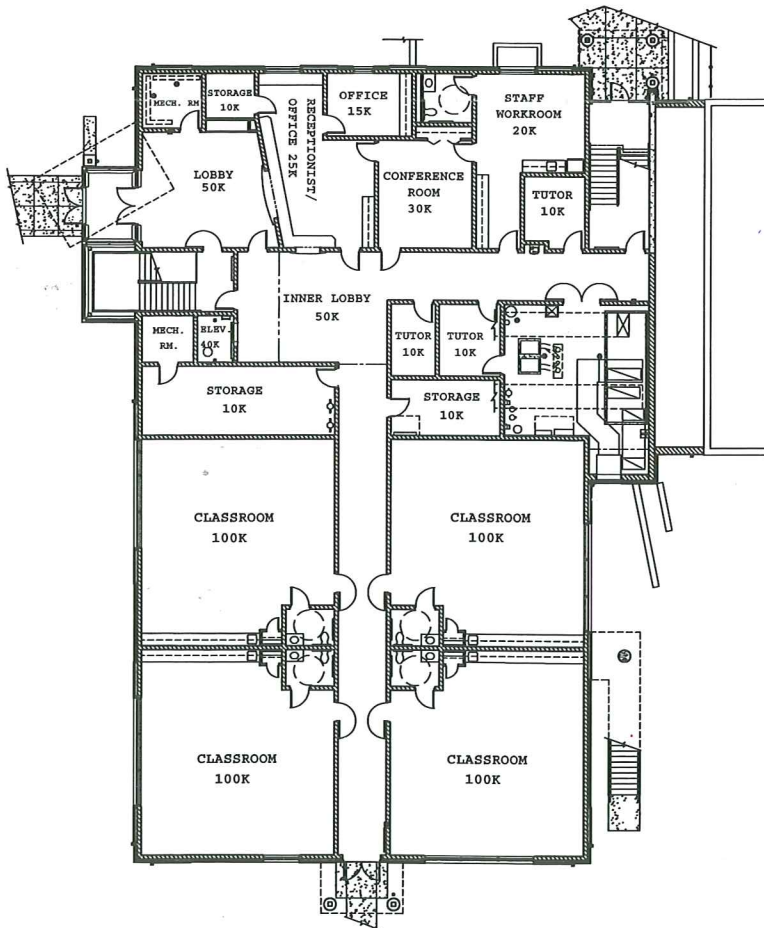
- **What is the future vision for growth and expansion?**  
The growth of the school depends on several factors including the value delivered by MCS, the local economy and population, the spiritual direction of the school, and parent commitment. Most important to our direction is how God chooses to use MCS in promoting and growing His reach in our students and our community. The MCS Board and Administration feels comfortable

in our current enrollment, but believe it is possible to grow patiently and selectively in the next few years.

- **How much of my gift will actually go to support the project?**  
100% of your gift will go toward the project. Designated funds are deposited in a separate account from other funds.
- **How can I get involved?**  
Contact MCS Superintendent, Dr. Cy Smith, at 419-756-5651, ext. 200 for information and/or materials.

## Early Childhood Education Wing Naming Opportunities Level 1

Total Cost: \$690K



## Early Childhood Education Wing Naming Opportunities Level 2

Total Cost: \$810K

